



Fox Delta

Amateur Radio Projects & Kits

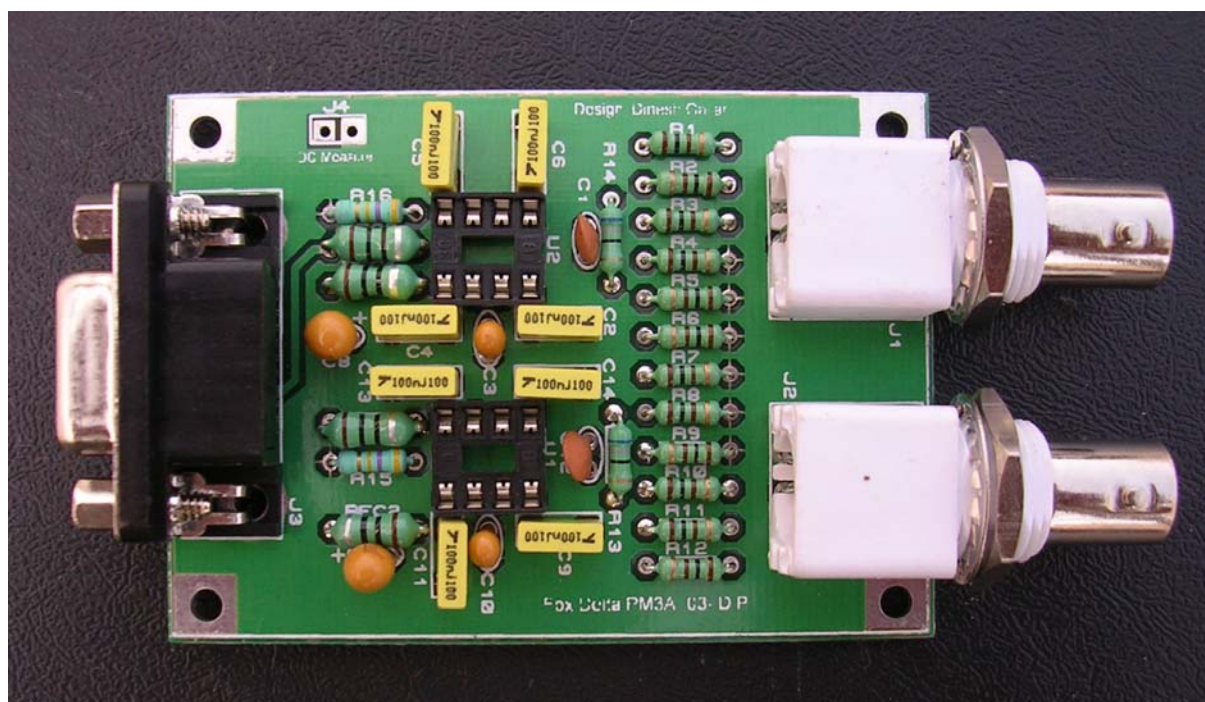
FD- PM3A

Screen snap & Kit Parts List: Dual Channel LCD 500MHZ RF Power Meter With Data Logger

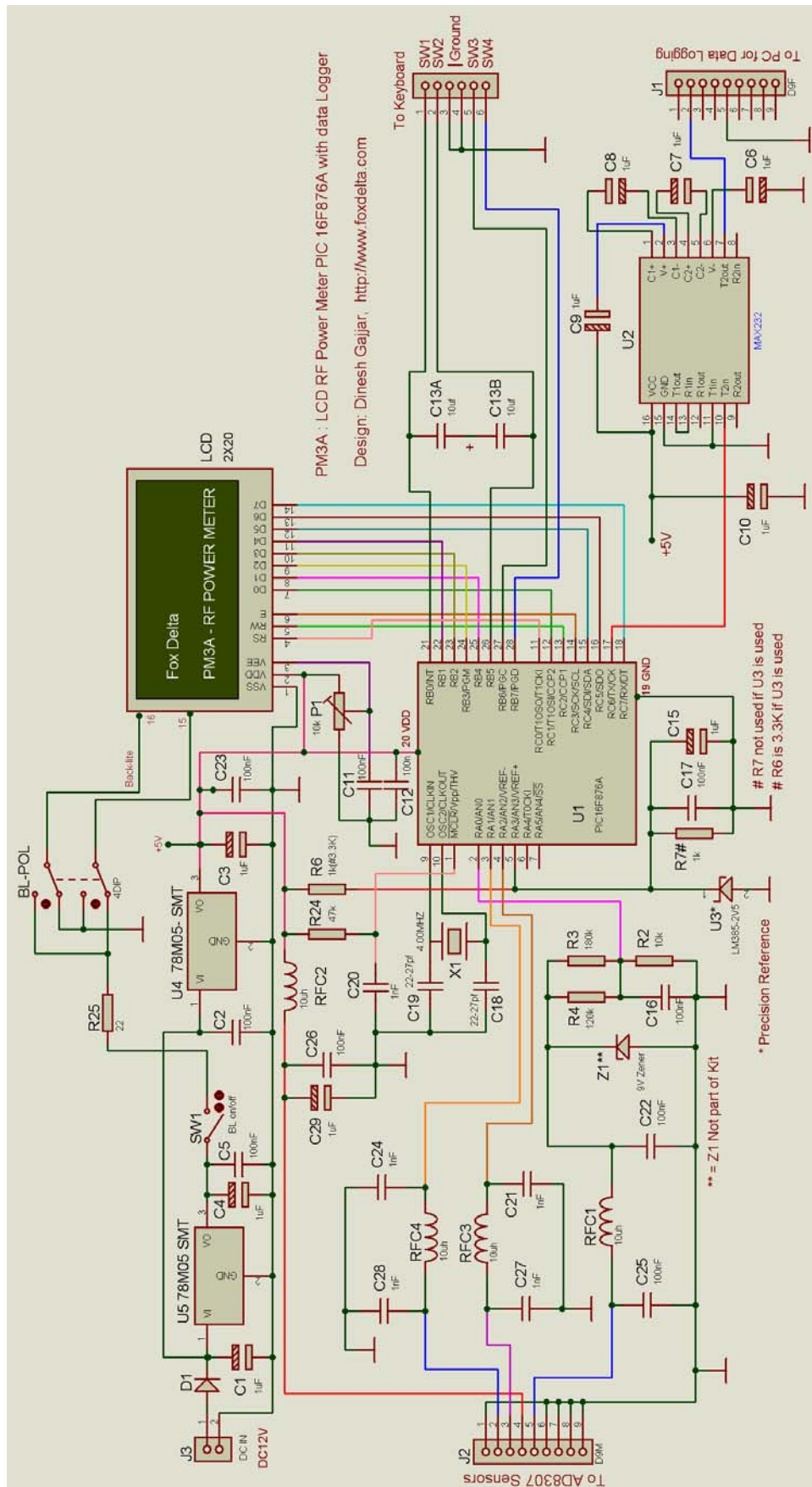
PM3A Kit:



500MHZ Sensor Board: (AD8307 DIP8)



PM3 Schematic:



PM3 AD8307 Schematic:

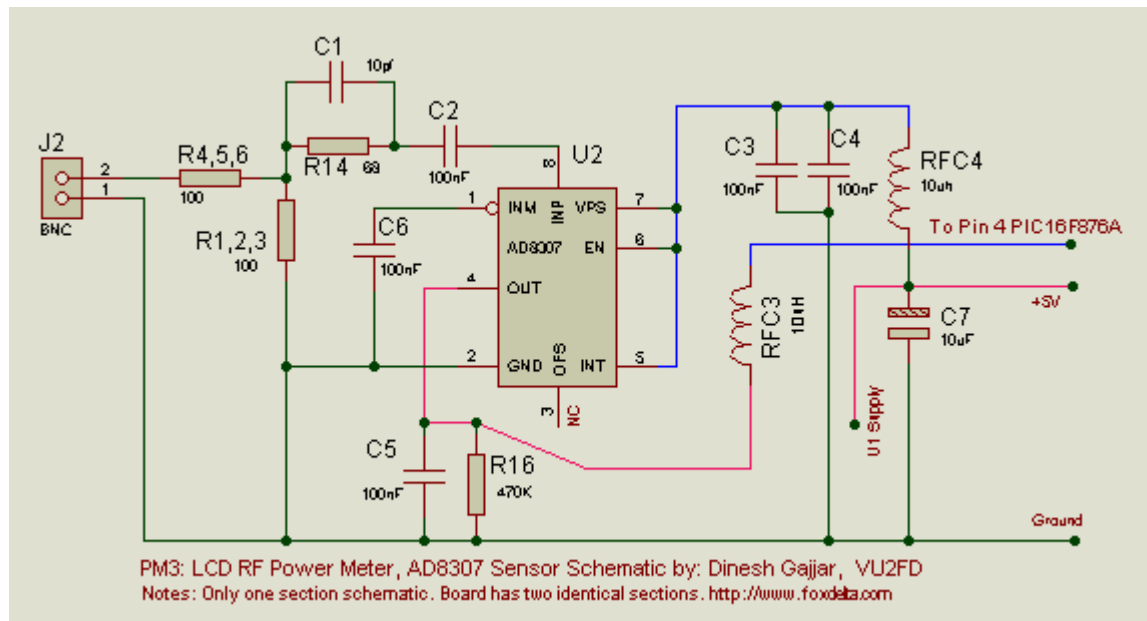


Table for equivalent component values on two sides of AD8307 Sensor sections:

	Input J2	Input J1
Resistors	R4, 5, 6	R10, 11, 12
	R14	R13
	R16	R15
	R1, 2, 3	R7, 8, 9
RFC	RFC3	RFC1
	RFC4	RFC2
Capacitors	C1	C12
	C2, 4, 5, 6	C9, 11, 13, 14
	C7	C8
	C3	C10
IC	U1	U2

PM3A Parts List:

Quantity	Check	Part Detail
1		PIC16F876A DIP (Pre-Programmed)
1		MAX232 DIP16
6		12mm Push Buttons with PTH PM3A-1 & 2 KB PCBs
1		Alps Encoder
1		2Way Push Switch with Knob (SW1) Back-Light Control
2		LCD Supports
1		Double Sided PTH PCB "PM3A"
2		78M05 Regulator
1		LM385-2,5V TO92
1		IC Socket 28Pin (PIC16f876A) (May be 14+14)
2		IC Sockets 8Pin (2xAD8307)
1		IC Socket 16Pin (MAX232)
1		LCD 2x20 (Includes male/female DIL headers) with Back-Light
2		6 Pin Female Header with 6Pin Male(KB)
1		4 Position DIP Switch (LCD B/L Polarity)
1		4.000 MHZ Crystal
1		16Pin FRC Male Socket Straight (LCD on Main Board)
1		16pin FRC R/A Socket for LCD (Remote Mount)
1		16pin FRC Ribbon cable with Both Side Female (LCD) 30cm
1		16Pin Female for LCD (Direct Mount)
1		D9 Female R/A Connector (PC Connection)
1		DC Connector
1		D9 Male R/A Connector (Connection to sensor board)
1		Standard D9 Male to Female Cable (1 Meter long)
Parts		Capacitors, Resistors & Inductors
2		10uf Tantalum (C13B/13A) (Only if 4xPush Button Keyboard is used)
11		1uf Tantalum (C1, 3, 4, 6, 7, 8, 9, 10, 14, 15, 29)
9		0.1uf Ploy (C2, 5, 11, 12, 17, 18, 23, 22, 25, 26)
5		0.001uf (1000pf) (C20, 21, 24, 27, 28)
2		22/27pf (C19, 18)
1		1N4007 (D1)
1		10K Bourns Preset (LCD BL) P1
1		22 ohm 1/4w (R1)
1		47K (R5)
1		3.3K (R6 : used when LM385 is installed)
1		120k (R3)
1		180k (R4)
1		10k (R2)
2		1k (R6, R7) (R7 is only installed when LM385 is not used)
4		RFC 10uh (RFC1, 2, 3, 4)
Sensor		
2		10uf Tan (C7, C8)
1		Sensor PTH PCB for AD8307 DIP8
2		10pf Ceramic (C1, 12)
2		68 ohms (R13, 14)
12		100 ohms (R1 to R12)
2		470k (R15, 16)
2		BNC R/A Connector
1		D9F R/A Connector
4		10uh RFC (RFC1, 2, 3, 4)
8		0.1uf Poly (C2, 4, 5, 6, 9, 11, 13, 14)
2		0.1uf Tantalum (C3, 10)

Notes: AD8307 not included with Kit or Assembled

Dinesh Gajjar / 14th Nov. 2008

For more details, please visit Project Page: <http://www.foxdelta.com>